

UNIVERSIDADE ESTADUAL DE CAMPINAS
SISTEMA DE BIBLIOTECAS DA UNICAMP
REPOSITÓRIO DA PRODUÇÃO CIENTÍFICA E INTELECTUAL DA UNICAMP

Versão do arquivo anexado / Version of attached file:

Versão do Editor / Published Version

Mais informações no site da editora / Further information on publisher's website:

<https://rbej.biomedcentral.com/articles/10.1186/1477-7827-9-94>

DOI: 10.1186/1477-7827-9-94

Direitos autorais / Publisher's copyright statement:

©2011 by BioMed Central. All rights reserved.

DIRETORIA DE TRATAMENTO DA INFORMAÇÃO

Cidade Universitária Zeferino Vaz Barão Geraldo

CEP 13083-970 – Campinas SP

Fone: (19) 3521-6493

<http://www.repositorio.unicamp.br>

RESEARCH

Open Access

In utero protein restriction causes growth delay and alters sperm parameters in adult male rats

Fabíola C Toledo^{1,2}, Juliana E Perobelli^{1,2}, Flávia PC Pedrosa², Janete A Anselmo-Franci³ and Wilma DG Kempinas^{2*}

Abstract

Background: Recent studies have supported the concept of “fetal programming” which suggests that during the intrauterine development the fetus may be programmed to develop diseases in adulthood. The possible effects of *in utero* protein restriction on sexual development of rat male offspring were evaluated in the present study.

Methods: Pregnant Wistar rats were divided into two experimental groups: one group treated with standard chow (SC, n = 8, 17% protein) and the other group treated with hypoproteic chow (HC, n = 10, 6% protein) throughout gestation. After gestation the two experimental groups received standard chow. To evaluate the possible late reproductive effects of *in utero* protein restriction, the male offspring of both groups were assessed at different phases of sexual development: prepubertal (30 days old); peripubertal (60 days old); adult (90 days old). Student's t-test and Mann-Whitney test were utilized. Differences were considered significant when $p < 0.05$.

Results: We found that *in utero* protein restriction reduced the body weight of male pups on the first postnatal day and during the different sexual development phases (prepubertal, peripubertal and adult). During adulthood, Sertoli cell number, sperm motility and sperm counts in the testis and epididymal cauda were also reduced in HC. Furthermore, the numbers of sperm presenting morphological abnormalities and cytoplasmic drop retention were higher in HC.

Conclusions: In conclusion, *in utero* protein restriction, under these experimental conditions, causes growth delay and alters male reproductive-system programming in rats, suggesting impairment of sperm quality in adulthood.

Background

In recent years, an increasing amount of evidence has supported the idea that disturbances occurring in critical periods of fetal development may determine permanent or long-term changes in the physiology or morphology of an organ [1]. There are several studies relating the gestational environment to the late effects on the body composition of animals, evidencing this phase as a critical period for the genesis of diseases. These studies support the concept of “fetal programming”, which suggests that, during intrauterine development, the fetus may be programmed to develop diseases during adulthood [2,3]. According to this paradigm, the susceptibility to diseases (including reproductive diseases and dysfunctions) is influenced by diet, environmental exposure to toxic agents and stress during the fetal and neonatal periods [4].

Development and growth in the intra- and post-uterine periods depend on the nutritional, hormonal and metabolic environment provided by the mother during gestation and lactation [5]. The physiological processes that occur during the gestational period, including augmented blood volume, increased tissue, and growth of the placenta and fetus require a higher contribution of nutrients (proteins, vitamins, mineral salts etc.). Protein contribution is known to be essential for the maintenance and success of a pregnancy [6].

One of the most important types of fetal programming is the profile of nutritional status in early life, with low birth weight being a marker of poor fetal nutrition [7]. In fact, prenatal malnutrition is the most frequently studied fetal programming model [2,3]. Based on the literature, maternal protein restriction, alone or combined with energy restriction during gestation, leads to consistent diminution of fetal growth in many species. According to Desai et al. [8], maternal protein deprivation not only affects the body growth of pups, but also

* Correspondence: kempinas@ibb.unesp.br

²Department of Morphology, Institute of Biosciences, UNESP - Universidade Estadual Paulista, Botucatu, SP, Brazil

Full list of author information is available at the end of the article

changes their body composition, selectively affecting their organs. Those authors also stated that the postnatal weight recovery of organs does not necessarily signify a morpho-functional recovery.

Most studies in this area are carried out to investigate the cardiovascular system [9-12]. Studies correlating maternal malnutrition effects with the development of the male reproductive system are scarce. The importance of prenatal and neonatal factors, especially the nutritional status, in the programming of the reproductive function has only become accepted in recent decades [13-17]. Currently, some authors have focused on verifying the late effects of nutrient restriction during pregnancy and lactation on sexual development and reproductive function of offspring in adulthood [16,18,19].

Birth weight is a crucial indicator of the degrees of compromise and development of the individual [17]. Studies have shown that *in utero* protein restriction causes low birth weight and compromises the establishment of puberty in male and female rats [16,17,20]. Puberty in the male rat begins around the age of 50 days [21]. At between 75 days (maximum sperm production) and 100 days of age (maximum concentration of sperm stored in the epididymis cauda), the animals are supposed to reach plain sexual maturity [21,22]. According to Clegg [23] and Ojeda et al. [24], the male postnatal sexual development is divided into 4 phases: (1) neonatal, from postnatal day (PND) 1 to 7; (2) infantile, from PND 8 to 21; (3) juvenile, PND 22 to 35; and (4) peripubertal, from PND 36 to 55 or 60.

Some authors have reported reduced testicular weight and increased expression of androgen receptors in the testicle of rat offspring that had been subjected to food or protein restriction during gestation [25,26]. Genovese et al. [27] reported a smaller number of Sertoli cells in adult animals that underwent malnutrition during fetal and prepubertal life. In addition, nutritional status is also known to cause a variety of effects on the endocrine system [28-31]. Changes in levels of corticosterone, testosterone, estradiol and LH were reported in both mothers and progeny after food restriction [16,26]. However, the influence of protein restriction on sperm production, storage and quality remains poorly understood.

Based on the relationship between malnutrition and programming of the male reproductive system, the present study aimed to evaluate the possible late effects of *in utero* protein restriction on the sexual development and reproductive function of adult male rats, focusing on sperm production, storage and quality.

Methods

The experimental protocol followed the Ethical Principles in Animal Research of the Brazilian College of

Animal Experimentation and was approved by the Biosciences Institute/UNESP Ethics Committee for Animal Experimentation (protocol n° 10/08-CEEA).

Animals

Adult female (60 days of age, $n = 20$) and male (90 days of age, $n = 10$) Wistar rats were supplied by the Central Biotherium of São Paulo State University - UNESP and were housed in polypropylene cages (43 cm × 30 cm × 15 cm) with laboratory-grade pine shavings as bedding. Rats were maintained under controlled temperature ($23 \pm 1^\circ\text{C}$) and lighting conditions (12:12-h photoperiod, light period beginning at 0700 h). Two non-gravid female rats were mated with one male, during the dark portion of the lighting cycle, and the day of sperm detection in the vaginal smear was considered day 0 of gestation (gestation day 0 - GD 0). The gravid females were randomly assigned between the experimental groups and housed individually in cages. Pregnant female rats were divided into two experimental groups: one treated with standard chow (SC, $n = 8$, 17% protein) and the other treated with hypoproteic chow (HC, $n = 10$, 6% protein) throughout gestation (GD0-GD21). During the lactation period the two groups received standard chow. After lactation, pups also received water and standard chow *ad libitum*. The low protein and standard diets, whose compositions are described in Table 1, were prepared in the Experimental Laboratory of the School of Medicine - UNESP, São Paulo State University, Botucatu, SP, Brazil. The diets were isocaloric and normosodic (0.20%).

Evaluation of the reproductive development of male offspring

On post-natal day 1 (PND 1) male pups were weighed and the litters were reduced to 10 pups, in order to

Table 1 Diet Compositions (g/kg)

Ingredient	Hypoproteic chow (6% protein)	Standard chow (17% protein)*
Cornstarch	480	397
Casein (84%)	71.5	202
Dextrinized cornstarch (90-94%)	159	130.5
Sucrose	121	100
Soybean oil	70	70
Fiber	50	50
Mineral mixture **	35	35
Vitamin mixture **	10	10
L-cystine	1	3
Choline bitartrate	2.5	2.5

* Diet formulated for the growth, pregnancy and lactational phases of rodents -AIN- 93G [61]

** According to AIN-93G

maintain a similar number of males and females. To evaluate the possible late reproductive effects of *in utero* protein restriction, the male offspring of both experimental groups (SC and HC) were assessed at different phases of sexual development: prepubertal (phase I, $n = 10$ per group) pups sacrificed at the age of 30 days; peripubertal (phase II, $n = 10$ per group) pups sacrificed at 60 days old; adult (phase III, $n = 20$ per group) pups sacrificed at 90 days of age. In phase III a larger number of rats was used because more parameters were assessed in these animals.

Collection and weighing of organs

At the specified ages, 10 pups per experimental group were anaesthetized with ether and killed by decapitation. The left testis and epididymis, seminal vesicle (without the coagulating gland and full of secretion), left deferens duct and ventral prostate were removed and their weights (absolute and relative to entire body) were determined. The right testis and epididymis from experimental animals were collected for processing and histological and / or morphometric analysis.

Phase III blood samples were collected from cervical vessels, ruptured by decapitation, to determine sexual hormone levels. Other pups in phase III ($n = 10$ per experimental group) were killed to collect the left testis to measure intratesticular testosterone and sperm from the deferens duct to analyze the sperm morphology and motility. The right testis and epididymis were collected for determination of the germ cell number.

Histological evaluation

The right testis and epididymis were removed and fixed in Alfac fixing solution (80% ethanol, formaldehyde and glacial acetic acid, 8.5: 1.0: 0.5, v/v) for 24 h. The pieces were embedded in paraffin wax and sectioned at 5 μ m. The sections were stained with hematoxylin and eosin, and observed by light microscopy, in a blind assay for histological examination.

One hundred seminiferous tubule cross sections per animal were evaluated as to normal or abnormal histological aspect. The whole epididymal histological sections were also evaluated.

Morphometric analysis

Sertoli cell number

To assess the possible effects of *in utero* protein restriction on the proliferation of Sertoli cells, the nuclei of Sertoli cells were counted in 20 seminiferous-tubule cross-sections per rat in phase III ($n = 8$ per group) at stage VII of spermatogenesis, as classified by Leblond & Clermont [32].

Stereological analysis

In addition to the histological evaluation, a more detailed assessment of the proximal cauda epididymis

was carried out by stereological analysis, according to the method described by Weibel [33]. Longitudinal sections of epididymal cauda were obtained from experimental animals at 60 and 90 days old and assessed with the aid of a Leica[®] light microscope at 200 \times magnification, 10 fields per animal. A test system consisting of a graticule with 120 points and 60 lines was employed to obtain the relative proportions of luminal, epithelial and interstitial compartments.

Degree of maturation of the germinal epithelium

In order to evaluate the maturation degree of the seminiferous epithelium, 100 cross-sections of seminiferous tubules per animal ($n = 8$ per group) in phases I, II and III, were evaluated randomly, using the adapted method of assigning values according to the type of mature germ cell most numerous in the tubular epithelium [34]: degree 1: spermatocytes I or II; degree 2: young spermatids with rounded nucleus (stage 1 to 8 of spermiogenesis); degree 3: spermatids in maturation phase, with ovoid or elongated nucleus (stage 9 to 14 of spermiogenesis); degree 4: spermatids in maturation phase, with elongated nucleus (stage 15 to 18 of spermiogenesis); degree 5: mature spermatids (stage 19 of spermiogenesis) in small quantity; degree 6: mature spermatids (stage 19 of spermiogenesis) in average amount; degree 7: mature spermatids (stage 19 of spermiogenesis) in larger amount. The number of seminiferous tubules in each degree was multiplied by its degree, and then the values were added and divided by 100, resulting in the "average degree".

Sperm counts, daily sperm production and sperm transit time through the epididymis

Homogenization-resistant testicular spermatids (stage 19 of spermiogenesis) and sperm in the caput/corpus epididymis and cauda epididymis were counted as described previously by Robb et al. [21], with adaptations specified by Fernandes et al. [35]: the right testis, decapsulated and weighed soon after collection, was homogenized in 5 mL of NaCl 0.9% containing Triton X100 0.5%, followed by sonication for 30 sec. After a 10-fold dilution a sample was transferred to a Neubauer chamber (four fields per animal), preceding a count of mature spermatids. To calculate daily sperm production (DSP) the number of spermatids at stage 19 was divided by 6.1, which is the number of days these spermatids are present in the seminiferous epithelium. Caput/corpus and cauda epididymis portions were counted as described for the testis. The sperm transit time through the epididymis was determined by dividing the number of sperm in each portion (caput/corpus and cauda epididymis) by the DSP.

Analysis of sperm motility

Sperm were obtained from the right deferens duct of rats in phase III ($n = 10$ per group) and immediately

diluted in 2 ml of modified HTF medium (Human Tubular Fluid, IrvineScientific®), pre-heated to 34°C. An aliquot of 10 µL was placed in a Makler chamber (Irvine, Israel) and analyzed under a light microscope, at 200X magnification. One hundred sperm were evaluated per animal and classified for motility into: type A: mobile, with progressive trajectory; type B: mobile, with non-progressive trajectory; type C: immobile.

Analysis of sperm morphology

For the evaluation of sperm morphology, the left deferens duct was sectioned at its extremities and washed with the aid of a syringe, coupled to a needle, containing 1.0 mL of formol-saline solution. The washed product was collected in an Eppendorf tube and, soon after, smears were prepared on histological slides and left to dry in open air.

Two hundred spermatozoa (heads only or intact sperm) per animal were evaluated for head and/or flagellar defects by phase-contrast microscopy (200X total magnification) [36]. These were also classified as the presence or absence of a cytoplasmic droplet.

Hormonal assay

After decapitation, blood was collected from the ruptured cervical vessels in a tube for the determination of serum testosterone, luteinizing hormone (LH) and follicle-stimulating hormone (FSH) levels. The serum was obtained after blood centrifugation (2400 rpm, 20 min, 4°C) and stored at -20°C until the moment of hormonal determination. Serum testosterone levels were determined by double-antibody radioimmunoassay using a Coat-A-Count_ kit (Diagnostics Products Corporation, Los Angeles, CA, USA). Serum LH and FSH levels were determined using specific kits provide by the National Institute of Arthritis, Diabetes, Digestive and Kidney Diseases (NIADDK; Baltimore, USA).

The left testis of each animal was removed and decapsulated, and the parenchyma was sliced into 50-mg pieces. Each piece was weighed and placed into a 1.5-mL microfuge tube containing 1.0 mL of Medium 199 (M199). The M199 was buffered with 0.71 g/L sodium bicarbonate (NaHCO₃) and 2.1 g/L Hepes, and contained 0.1% BSA (Schwartz-Mann, Orangeburg, NY) and 25 mg/L soybean trypsin inhibitor, pH 7.4. After centrifugation (5 min, 10000 rpm), the medium was frozen at -70 °C until the testosterone assay was performed using a Coat-A-Count_ kit (Diagnostics Products Corporation, Los Angeles, CA, USA).

Statistics

Values were expressed as mean ± SEM and medians. To compare results between the experimental groups, the

Student's t-test and Mann-Whitney test were used. Differences were considered significant when $p < 0.05$.

Results

At PND1 and at different studied phases of development (30, 60 and 90 days old) the HC group animals presented a statistically significant reduction in body weight (Table 2). The absolute weights (mg) of the rat testis at 30 days old (HC Group: $163.67 \pm 13.97^*$; SC Group: 200.85 ± 8.29) and the deferens duct (mg) of the 90-day-old rats (HC Group: $84.97 \pm 2.75^*$; SC Group: 95.85 ± 3.29) were statistically lower in the HC than the SC group (values expressed as mean ± SEM, $*p < 0.05$). The relative and absolute weights of the other sexual organs were similar between the experimental groups at PND 30, 60 and 90 (data not shown).

Histological analysis of the testis did not reveal differences between the experimental groups (Figure 1 and Table 3). However, the HC group presented statistically fewer Sertoli cell nuclei in the seminiferous epithelium of 90-day-old rats than the SC group (Table 3). The histological evaluation of the epididymis (data not shown), as well as the stereological analysis of the epididymal cauda (Table 3) did not reveal any alteration that could be attributed to *in utero* protein restriction. The experimental groups did not differ statistically in the degree of maturation of the seminiferous epithelium at any age (data not shown).

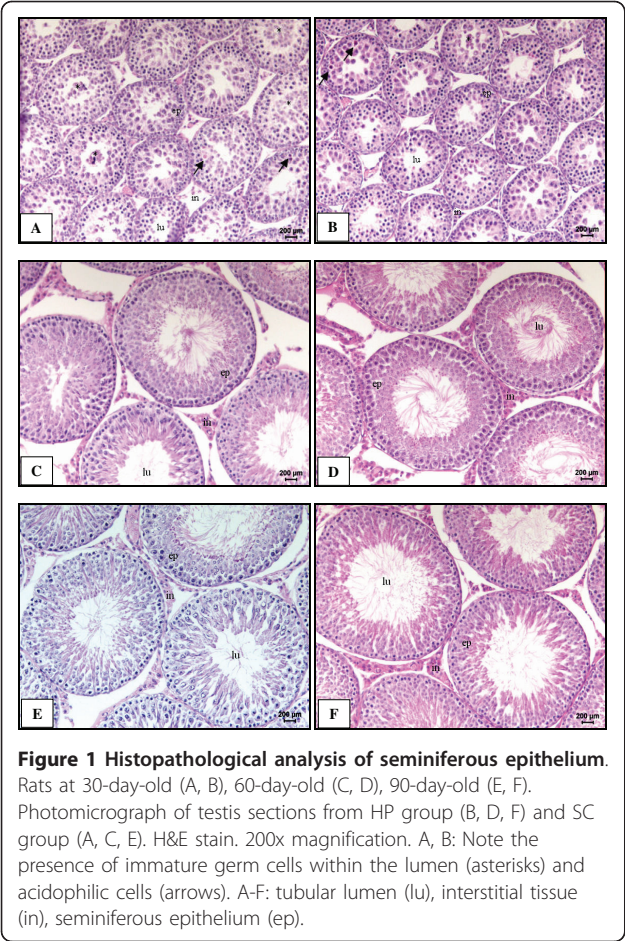
Protein restriction *in utero* caused a statistically significant reduction in the number of mature spermatids in the testis, in the daily sperm production (DSP) and in the number of sperm stored in the cauda epididymis. Caput/corpus epididymis sperm number and the epididymal sperm transit time were unchanged (Table 4).

Sperm motility evaluation showed a significant increase in the number of type B sperm (mobile, with non-progressive trajectory) in HC when compared to the SC group (Figure 2). The percentage of sperm with abnormal morphology (mainly head abnormalities) was statistically higher in HC than SC (Table 4). In both experimental groups, the cytoplasmic droplet was localized in the middle region of the sperm tail. However, in

Table 2 Body weight (g) of male pups on PND1 (n = 10 litters per experimental group), on PND30, 60 and 90 (HC group: n = 10 pups per age; SC group: n = 8 pups per age)

Body weight (g)	HC Group	SC Group
DPN 1	$6.07 \pm 0.12^*$	6.87 ± 0.18
DPN 30	$57.53 \pm 2.65^*$	70.88 ± 2.01
DPN 60	$257.42 \pm 8.81^*$	287.40 ± 5.67
DPN 90	$351.53 \pm 11.93^*$	407.15 ± 9.75

Values expressed as mean ± SEM. Student's t test, $*p < 0.05$



the HC group the percentage of spermatozoa with cytoplasmic droplet was statistically higher when compared to the SC group (Table 4).

Protein restriction *in utero* provoked a non-significant reduction of about 27% in serum testosterone compared to the SC group. Moreover, the concentration of intratesticular testosterone and serum

concentrations of FSH and LH were similar between groups (Figure 3).

Discussion

There is an association between intrauterine growth delay and emergence of diseases in adulthood. This leads to the hypothesis that diseases may have a fetal origin, suggesting that adverse environmental factors such as *in utero* protein malnutrition act in the programming and development of fetal tissue to produce dysfunction and, later, diseases [5,37,38]. Since the end of the 1990s, the possibility of intergenerational effects as a consequence of malnutrition has been considered, with a mistaken initial explanation that these effects were solely due to genetic factors [39]. In 2007, Burdge and co-authors [40] showed that alterations in the methylation status in specific genes of rat pups (F1) exposed to protein restriction during pregnancy can be passed along to subsequent generations, suggesting the importance of epigenetic mechanisms.

In the present study *in utero* protein restriction led to rat body weight reduction, which persisted through different sexual development phases, corroborating previous studies. Melo & Cury [41] found low serum levels of fatty acids and low fat and protein content in the carcasses of pregnant rats that received a hypoproteic diet (6% protein), and concluded that this diet probably affects the supply of circulating nutrients and leads to low pup birth weight. Some authors have shown that protein restriction in pregnant and/or breastfeeding rats can cause metabolic and physiological changes in the offspring, which may be permanent even if the animal has free access to a normal protein diet after weaning [16,42-44].

The absolute and relative weights of organs such as testicles, epididymis, pituitary, seminal vesicle and prostate are useful parameters to evaluate the risks to the male reproductive system. The normal weight of the

Table 3 Analysis of testicular histology (30-, 60- and 90-day-old rats), Sertoli-cell-nucleus number (90-day-old rats) and epididymis stereology (60- and 90-day-old rats)

	HC Group			SC Group		
	30 days (n = 10)	60 days (n = 9)	90 days (n = 9)	30 days (n = 10)	60 days (n = 9)	90 days (n = 10)
Testis						
Normal tubules (%)	68.0 [63.5-70.7]	98.0 [97.0-99.0]	97.0 [96.0-98.0]	70.0 [66.0-70.0]	97.0 [97.0-99.0]	96.0 [96.0-97.0]
Sertoli cell nucleus Number			10.53 ± 0.13*			11.45 ± 0.13
Epididymis						
Epithelium (%)		25.6 [22.6-28.9]	11.9 [8.3-15.0]		24.7 [21.1-27.8]	12.5 [9.8-16.0]
Lumen (%)		46.4 [38.7-50.3]	72.0 [67.9-78.0]		47.6 [41.8 -52.8]	71.4 [66.0-75.9]
Interstice (%)		26.8 [23.8-35.1]	14.9 [11.8-17.9]		29.2 [23.4-33.2]	16.0 [12.2-21.1]

HC group: hypoproteic chow; SC group: standard chow.
Values expressed as mean ± SEM or median and interquartile intervals [Q₁ - Q₃]. Mann-Whitney Test. *p < 0.05

Table 4 Sperm parameters (numbers and morphology) of 90-day-old adult male rats

Parameters	HC Group (n = 10)	SC Group (n = 10)
Sperm counts in the testis		
Spermatid number ($\times 10^6$)	140.30 \pm 5.61*	168.77 \pm 8.98
Spermatid number/g organ ($\times 10^6$ /g)	116.28 \pm 4.31	133.22 \pm 8.04
DSP ($\times 10^6$ /testis/day)	23.05 \pm 0.92*	27.66 \pm 1.47
rDSP ($\times 10^6$ /day/g)	19.11 \pm 0.73	21.83 \pm 1.32
Sperm counts in the epididymis		
<i>Caput/Corpus</i>		
Sperm number ($\times 10^6$)	113.95 \pm 6.50	123.98 \pm 7.34
Sperm number/g organ ($\times 10^6$ /g)	386.00 \pm 14.35	386.08 \pm 17.66
Sperm transit time (days)	4.96 \pm 0.32	4.56 \pm 0.31
<i>Cauda</i>		
Sperm number ($\times 10^6$)	140.09 \pm 8.62*	182.12 \pm 4.47
Sperm number/g organ ($\times 10^6$ /g)	895.93 \pm 38.38*	1091.50 \pm 44.84
Sperm transit time (days)	6.12 \pm 0.35	6.70 \pm 0.32
Sperm morphology		
¹ Normal shaped sperm (%)	94 [92.25 - 94.87]*	96.25 [95.62 - 96.87]
¹ Sperm with cytoplasmatic droplet (%)	70.25 [64.50 - 79.37]*	45.75 [37.13 - 54.87]

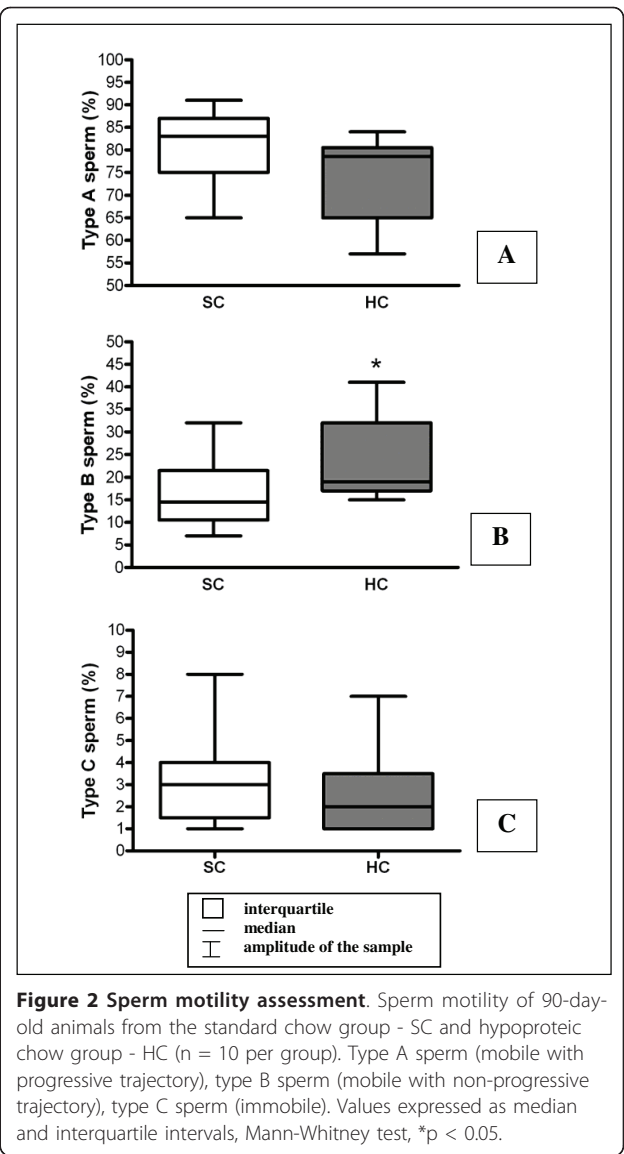
HC group: hypoproteic chow; SC group: standard chow.

DSP - Daily sperm production. rDSP - Relative daily sperm production. Values expressed as mean \pm SEM. ¹ Values expressed as median and interquartile intervals [Q₁ - Q₃]. Mann-Whitney Test. *p < 0.05.

testis varies little among individuals of the same species, which suggests that its absolute weight is an accurate indicator of gonadal injury, although this parameter may not indicate the nature of the effect [45]. The reduced absolute weight of the prepubertal testicle and adult vas deferens among the HC group can be partly explained by the lower body weight of these animals since, when analyzed in relative terms (g organ/100 g body weight), those same parameters did not differ between experimental groups.

Hormones play a vital role in the establishment and maintenance of male reproductive function [46]. Nutrition is known to cause several effects on the endocrine system [28-31]. Changes in the levels of testosterone, FSH and LH are reported in the offspring of different animal species subjected to malnutrition [16,17,19,26] but, despite a 27% reduction in serum testosterone, our study did not show any statistically significant reduction in sexual hormone levels.

Although the epithelium maturation degree and the results of testicle histological analysis of HC rats in the different developmental phases did not show damage to the seminiferous epithelium, the number of Sertoli cell nuclei was reduced in adult animals. Sertoli cells play a fundamental role in mammalian testicular development and function. In rats, their active proliferation



commences during the fetal period and ceases between 2-3 weeks after birth [47].

One of the main functions of the Sertoli cell is to generate a suitable environment for the proliferation and maturation of germ cells. The number of Sertoli cells is a determinant factor for maximum sperm production in adulthood [48]. Thus, changes in the number, structure and/or function of this cell type may damage the germ epithelium and compromise spermatogenesis [49]. Malnutrition from the fetal period to puberty can lead to alterations in the programming of the Sertoli cell number. The low DSP in adults constitutes strong evidence that malnutrition at the beginning of life alters this programming [27]. In our study, the DSP reduction found in HC animals is consistent with the decreased number of Sertoli cells and the 27% reduction in serum

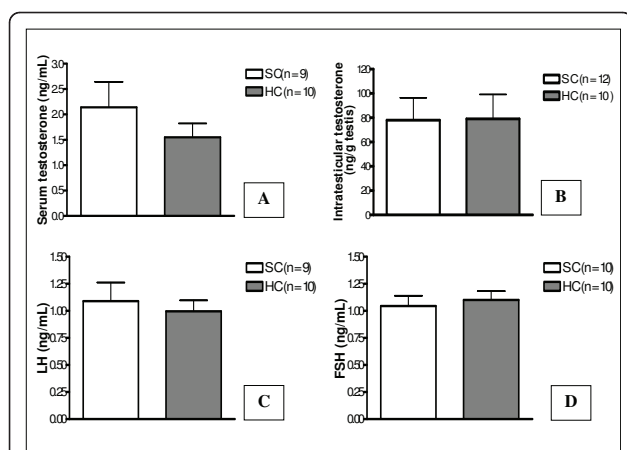


Figure 3 Serum hormone levels and intratesticular testosterone concentration. Serum testosterone levels (A), intratesticular testosterone levels (B), serum LH levels (C) and serum FSH levels (D) of 90-day-old animals from the standard chow group - SC and hypoprotein chow group - HC. Values expressed as mean \pm SEM. Mann-Whitney test.

testosterone levels. These results corroborate those of Zambrano et al. [16] who subjected rats to *in utero* protein restriction and also observed low sperm count and low fertility rate. These authors concluded that prenatal effects on count and fertility highlight the importance of interactions between different key components in testicular development.

Spermatozoa produced in the testicle are transported to the epididymis, where they undergo a maturation process that confers the motility and capacity needed to fertilize the oocyte [50,51]. Sperm motility is one of the most important parameters used to evaluate the fertile ability of spermatozoa obtained from semen samples both *in vitro* [52] and *in vivo* [53,54]. Changes in motility parameters can lead to sperm inefficiency in penetrating the cervical mucus, thus preventing their access to the oocyte and reducing their fertilizing capacity [45,55-57]. Drop retention in ejaculated sperm may be associated with infertility in several animal species [58]. Zini et al. [59] associated cytoplasmic droplet retention with low sperm motility. Gatti et al. [51] verified that cytoplasmic droplet migration occurs simultaneously with augmentation of sperm motility, but the direct relationship between these two events has not been demonstrated.

The increased number of motile sperm with non-progressive movement and the augmented rate of sperm with cytoplasmic droplet retention in the present study suggest that at least part of the epididymal functions and sperm maturation were affected by protein restriction, although the epididymal structure and the sperm transit time were normal.

Another important parameter for evaluating the fertility potential of males is sperm morphology since sperm alterations may suggest cytotoxic events. In the present study the increased number of spermatozoa presenting head abnormalities may reflect germ cell mutagenicity [60] and deleterious effects of *in utero* protein restriction on the spermatogenic process. Additional studies are necessary to better investigate possible sperm DNA damage and the consequent risk to male fertility potential in present and subsequent generations.

Conclusion

We can conclude that *in utero* protein restriction, under these experimental conditions, caused growth delay and altered the male reproductive-system programming in rats, leading to a reduction in Sertoli cell and sperm numbers, impairment of sperm motility and morphology, suggesting impairment of sperm quality in adulthood.

Acknowledgements

This work was supported by The State of São Paulo Research Foundation (FAPESP) by means of scholarships to F.C.T. and F.P.C.P. (Grants # 07/57375-5 and 08/51374-0). The authors thank the technicians from the Experimental Laboratory at the School of Medicine of Botucatu, São Paulo State University - UNESP, Brazil, for helping with the production of animal diets.

Author details

¹Graduate Program in Cell and Structural Biology, Institute of Biology, University of Campinas - UNICAMP, Campinas, SP, Brazil. ²Department of Morphology, Institute of Biosciences, UNESP - Universidade Estadual Paulista, Botucatu, SP, Brazil. ³Department of Morphology, Stomatology and Physiology, School of Dentistry, University of São Paulo - USP, Ribeirão Preto, SP, Brazil.

Authors' contributions

All authors participated in the design and interpretation of the studies, analysis of the data and review of the manuscript; FCT, JEP, FPCP, JAAF conducted the experiments; FCT and WDGK wrote the manuscript. This study represents part of FCT's Masters Thesis presented to the State University of Campinas, under the advisory of WDGK. All authors read and approved the final manuscript.

Competing interests

The authors declare that they have no competing interests.

Received: 22 December 2010 Accepted: 24 June 2011

Published: 24 June 2011

References

- Ashton N: Perinatal development and adult blood pressure. *Braz J Med Biol Res* 2000, **33**:731-740.
- Langley-Evans SC, Gardner DS, Welham SJ: Intrauterine programming of cardiovascular disease by maternal nutritional status. *Nutrition* 1998, **14**:39-47.
- Edwards LJ, Coulter CI, Symonds ME, Mcmillen IC: Pre-natal undernutrition, glucocorticoids and the programming of adult hypertension. *Clin Exp Pharmacol Physiol* 2001, **28**:938-941.
- Heindel JJ: Role of exposure to environmental chemicals in the developmental basis of disease and dysfunction. *Reprod Toxicol* 2007, **23**:257-259.
- Desai M, Hales CN: Role of fetal and infant growth in programming metabolism in later life. *Biol Rev Camb Philos Soc* 1997, **72**:329-348.

6. Dietary Reference Intake (DRI): Nutrition during pregnancy: Part I: Weight gain, Part II: Nutrient supplements. [http://www.nap.edu/openbook.php?record_id=1451].
7. Lucas A, Fewtrell MS, Cole TJ: Fetal origins of adult disease - the hypothesis revisited. *B M J* 1999, **319**(suppl 7204):245-249.
8. Desai M, Crowther NJ, Lucas A, Hales CN: Organ-selective growth in the offspring of protein-restricted mothers. *Brith J Nutri* 1996, **76**:591-603.
9. Langley SC, Jackson AA: Increased systolic blood pressure in adult rats induced by fetal exposure to maternal low protein diets. *Clin Sci* 1994, **86**:217-222.
10. Hoet JJ, Hanson MA: Intrauterine nutrition: its importance during critical periods for cardiovascular and endocrine development. *J Physiol* 1999, **514**:617-627.
11. Torrens C, Brawley L, Barker AC, Itoh S, Poston L, Hanson MA: Maternal protein restriction in the rat impairs resistance artery but not conduit artery function in pregnant offspring. *J Physiol* 2003, **547**:77-84.
12. Sherman RC, Langley-Evans SC: Antihypertensive treatment in early postnatal life modulates prenatal dietary influences upon blood pressure in the rat. *Clin Sci* 2000, **98**:269-275.
13. Gunn RG, Doney JM, Russel AJF: Embryo mortality in Scottish Blackface ewes as influenced by body condition at mating and by post-mating nutrition. *Aust J Agric Sci* 1972, **79**:19-25.
14. Gunn RG: The effects of two nutritional environments from 6 weeks prepartum to 12 months of age on lifetime performance and reproductive potential of Scottish Blackface ewes in two adult environment. *Anim Prod* 1977, **25**:155-164.
15. Allden WG: Undernutrition of Merino sheep and its sequelae 5. The influence of severe growth retardation during early post-natal life on reproduction and growth in later life. *Aust J Agric Sci* 1979, **30**:939-948.
16. Zambrano E, Rodríguez-González GL, Guzmán C, García-Becerra R, Boeck L, Díaz L, Menjivar M, Larrea F, Nathanielsz PW: A maternal low protein diet during pregnancy and lactation in the rat impairs male reproductive development. *J Physiol* 2005, **563**:275-284.
17. Guzmán C, Cabrera M, Cárdenas M, Larrea F, Nathanielsz PW, Zambrano E: Protein restriction during fetal and neonatal development in the rat alters reproductive function and accelerates reproductive ageing in female progeny. *J Physiol* 2006, **572**:97-108.
18. Rhind SM, Rae MT, Brooks AN: Effects of nutrition and environmental factors on the fetal programming of the reproductive axis. *Reproduction* 2001, **122**:205-214.
19. Rae MT, Kyle CE, Millar DW, Hammond AJ, Brooks AN, Rhind SM: The effects of undernutrition, *in utero*, on reproductive function in adult male and female sheep. *Anim Reprod* 2002, **72**:63-71.
20. Leonhardt M, Lesage J, Croix D, Dutriez-Casteloot I, Beauvillain JC, Dupouy JP: Effects of perinatal maternal food restriction on pituitary-gonadal axis and plasma leptin level in rat pup at birth and weaning and on timing of puberty. *Biol Reprod* 2003, **68**:390-400.
21. Robb GW, Amann RP, Killian GJ: Daily sperm production and epididymal sperm reserves of pubertal and adult rats. *J Reprod Fert* 1978, **54**:103-107.
22. Zanato VF, Martins MP, Anselmo-Franci JA, Petenunci SO, Lamano Carvalho TL: Sexual development of male *Wistar* rats. *Braz J Med Biol Res* 1994, **27**:1273-1280.
23. Clegg E: The age at which male rats become fertile. *J Reproduct Fert* 1960, **1**:119-120.
24. Ojeda SR, Andrews WW, Advis JP, White SS: Recent advances in the endocrinology of puberty. *Endocr Rev* 1980, **1**:228-257.
25. Mota EC, Santos AM, Toste FP, Sampaio FJB, Ramos CFR: Effects of malnutrition in the testis. *Braz J Urol* 2001, **27**:500-506.
26. Teixeira CT, Silandre D, Santos AMS, Delalandre C, Sampaio FJB, Carreau S, Ramos CF: Effects of maternal undernutrition during lactation on aromatase, estrogen, and androgen receptors expression in rat testis at weaning. *J Endocrinol* 2007, **192**:301-311.
27. Genovese P, Núñez ME, Pombo C, Bielli A: Undernutrition during foetal and post-natal life affects testicular structure and reduces the number of Sertoli cells in the adult rat. *Reprod Dom Anim* 2009, **44**:1-4.
28. Moura AS, Caldeira-Filho JS, Mathias PC, Franco de Sá CCN: Insulin secretion impairment and insulin sensitivity improvement in adult rats undernourished during early lactation. *Res Commu Mol Path* 1997, **96**:180-192.
29. Rocha de Melo AP, Guedes RCA: Spreading depression is facilitated in adult rats previously submitted to short episodes of malnutrition during the lactation period. *Braz J Med Biol Res* 1997, **30**:663-669.
30. Passos MCF, Ramos CF, Moura EG: Short and long term effects of malnutrition in rats during lactation on the body weight of offspring. *Nutr Res* 2000, **20**:1603-1612.
31. Teixeira CT, Passos MCF, Ribeiro CRS, Dutra SP, Moura EG: Leptin serum concentration, food intake and body weigh in rats whose mothers were exposed to malnutrition during lactation. *J Nutr Bioch* 2002, **13**:493-498.
32. Leblond CP, Clermont Y: Spermatogenesis of rat, mouse, hamster and guinea pig as revealed by the "periodic acid-fuchsin sulfureous acid" technique. *Am J Anat* 1952, **90**:167-215.
33. Weibel ER: Principles and methods for the morphometric study of the lung and other organs. *Lab Invest* 1963, **12**:131-155.
34. Lamano-Carvalho TL, Guimarães MA, Kempinas WG, Petenunci SO, Rosa e Silva AAM: Effects of guanethidine-induced sympathetomy on the spermatogenic and steroidogenic testicular functions of prepubertal to mature rats. *Andrologia* 1996, **28**:117-122.
35. Fernandes GSA, Arena AC, Fernandez CDB, Mercadante A, Barbisan LF, Kempinas WG: Reproductive effects in male rats exposed to diuron. *Reprod Toxicol* 2007, **23**:106-112.
36. Filler R: Methods for evaluation of rats epididymal sperm morphology. In *Male reproductive toxicology*. Edited by: Chapin RE, Heindel JH. California: Academic Press; 1993:334-343.
37. Godfrey KM, Barker DJP: Fetal nutrition and adult disease. *Am J Clin Nutr* 2000, **71**:1344S-1352S.
38. Armitage JA, Taylor PD, Poston L: Experimental models of developmental programming: consequences of exposure to an energy rich diet during development. *J Physiol* 2005, **565**:3-8.
39. Petry CJ, Desai M, Ozanne SE, Hales CN: Early and late nutritional windows for diabetes susceptibility. *Proc Nutr Soc* 1997, **56**:233-242.
40. Burdge GC, Slater-Jefferies J, Torrens C, Phillips ES, Hanson MA, Lillycrop KA: Dietary protein restriction of pregnant rats in the F0 generation induces altered methylation of hepatic gene promoters in the adult male offspring in the F1 and F2 generations. *Br J Nutr* 2007, **97**:435-439.
41. Melo MAR, Cury L: Maternal adaptations for fetal growth in young malnourished rats. *Braz J Med Biol Res* 1988, **21**:1053-1056.
42. Ramos CF, Teixeira CV, Passos MC, Pazos-Moura CC, Lisboa PC, Curty FH, de Moura EG: Low-protein diet changes thyroid function in lactating rats. *Proc Soc Exp Biol Med* 2000, **224**(suppl 4):256-263.
43. Bieswal F, Ahn MT, Reusens B, Holvoet P, Raes M, Rees WD, Remacle C: The importance of catch-up growth after early malnutrition for the programming of obesity in male rat. *Obesity* 2006, **14**(suppl 8):1330-1343.
44. Zambrano E, Bautista CJ, Deás M, Martínez-Samayoa PM, González-Zamorano M, Ledesma H, Morales J, Larrea F, Nathanielsz PW: A low maternal protein diet during pregnancy and lactation has sex- and window of exposure-specific effects on offspring growth and food intake, glucose metabolism and serum leptin in the rat. *J Physiol* 2006, **571**:221-230.
45. Clegg ED, Perreault SD, Klinefelter GR: Assessment of male reproductive toxicology. In *Principles and Methods of Toxicology*. 4 edition. Edited by: Hayes AW. Philadelphia: Taylor & Francis; 2001:1263-1299.
46. Meeker JD, Godfrey-Bailey L, Hauser R: Relationships between serum hormone levels and semen quality among men from an infertility clinic. *J Androl* 2007, **28**:397-406.
47. Franca LR, Avelar GF, Almeida FFL: Spermatogenesis and sperm transit through the epididymis in mammals with emphasis on pigs. *Theriogenology* 2005, **63**:300-318.
48. Sharpe RM: Regulation of spermatogenesis. In *The physiology of reproduction*. 2 edition. Edited by: Knobil E, Nelly JD. New York: Raven press; 1994:1363-1434.
49. Boekelheide K, Johnson KJ, Richburg JH: Sertoli cell toxicants. In *Sertoli cell Biology*. Edited by: Skinner MK, Griswold MD. San Diego: Elsevier Academic Press; 2005:345-382.
50. Orgebin-Crist MC: Studies on the function of the epididymis. *Biol Reprod* 1969, **1**:155-175.
51. Gatti JL, Castella S, Dacheux F, Ecruy H, Métayer S, Thimon V, Dacheux JL: Post-testicular sperm environment and fertility. *Anim Reprod Sci* 2004, **82**:321-339.

52. Mahadevan MM, Trounson AO: **The influence of seminal characteristics on the success rate of human in vitro fertilization.** *Fertil Steril* 1984, **42**:400-405.
53. Bostofte E, Bagger P, Michael A, Stakemann G: **Fertility prognosis for infertile men from two different population evaluated by the Cox regression model.** *Fertil Steril* 1990, **54**:1100-1106.
54. Barratt CLR, Tomlinson MJ, Cooke ID: **Prognostic significance of computerized motility analysis for in vivo fertility.** *Fertil Steril* 1993, **60**:520-525.
55. Aitken RJ, Sutton M, Waner P, Richardson DW: **Relationship between the movement characteristics of human spermatozoa and their ability to penetrate cervical mucus and zona-free hamsters oocytes.** *J Reprod Fertil* 1985, **73**:441-449.
56. Feneux D, Serres C, Jouannet P: **Sliding spermatozoa: a dyskinesia responsible for human infertility?** *Fertil Steril* 1985, **44**:508-511.
57. Mortimer D, Panday IJ, Sawers RS: **Relationship between human sperm motility characteristics and sperm penetration into human cervical mucus in vitro.** *J Reprod Fertil* 1986, **78**:93-102.
58. Cooper TG: **Cytoplasmic droplets: the good, the bad or just confusing?** *Human reproduction* 2005, **20**:9-11.
59. Zini A, O'Bryan MK, Israel L, Schlegel PN: **Human sperm NADH and NADPH diaphorase cytochemistry: correlation with sperm motility.** *Urology* 1998, **51**:464-468.
60. U.S.EPA. United State Environmental Protection Agency: **Reproductive Toxicity Risk Assessment Guidelines.** 1996, **61**:56273-56322.
61. Reeves PG, Nielsen FH, Fahey GC: **AIN-93 Purified diets for laboratory rodents: final report of the American Institute of Nutrition Ad Hoc writing Committee on the reformulation of the AIN-76A rodent diet.** *J Nutr* 1993, **123**:939-951.

doi:10.1186/1477-7827-9-94

Cite this article as: Toledo et al.: In utero protein restriction causes growth delay and alters sperm parameters in adult male rats. *Reproductive Biology and Endocrinology* 2011 **9**:94.

Submit your next manuscript to BioMed Central and take full advantage of:

- Convenient online submission
- Thorough peer review
- No space constraints or color figure charges
- Immediate publication on acceptance
- Inclusion in PubMed, CAS, Scopus and Google Scholar
- Research which is freely available for redistribution

Submit your manuscript at
www.biomedcentral.com/submit

